



30 Albany Road, Old Windsor, Windsor, SL4 2QA  
£575,000

 **HORLER**



### 30 Albany Road, Old Windsor, Windsor, SL4 2QA

Situated in Albany Road, Old Windsor, this beautifully presented end-terrace house offers a delightful family home. With three well-proportioned bedrooms and a thoughtfully designed layout, this property is perfect for those seeking comfort and convenience.



**Property Summary**

Upon entering, you are greeted by a spacious dining room that flows seamlessly into a fitted kitchen, complete with a range of eye and base level units and integral appliances, making it a joy for any home cook. The large living room is a highlight, featuring French doors that open into a bright conservatory, providing an ideal space for relaxation and entertaining. The conservatory further leads to a fully enclosed and secluded rear garden, which boasts a patio area perfect for al fresco dining, a lush lawn for children to play, and a wooden shed for additional storage.

The first floor comprises two generous double bedrooms, both equipped with fitted storage, alongside a single bedroom that also benefits from built-in storage solutions. A family bathroom completes this level, ensuring ample facilities for the household.

Outside, the property offers parking for two vehicles at the front, along with a side access gate leading to the rear garden. The location is particularly advantageous, being close to local amenities, reputable schools, and excellent transport links, making it an ideal choice for families and commuters alike.

This property is a wonderful opportunity to acquire a lovely family home in a sought-after area, combining modern living with the charm of Old Windsor.

**General Information**

Council Tax Band 'D'

**Legal Note**

\*\*\*A;though these particulars are thought to be materially correct their accuracy cannot be guaranteed and they do not form part of any contract\*\*\*

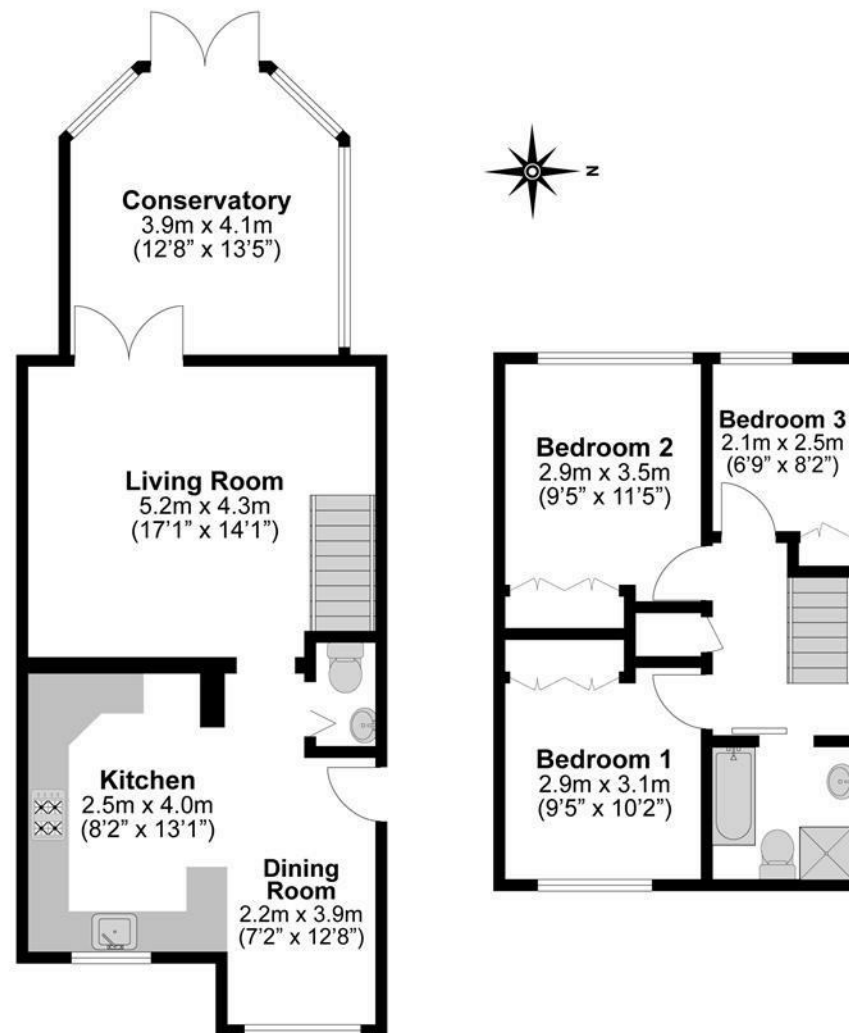












**Illustrations are for identification purposes only,  
measurements are approximate, not to scale.**